



Contract N° :
IEE/10/222/ SI2.591026
Duration: 05/2011 – 04/2014

Methodology estimating the energy storage needs

Overview

Development
of renewable
energies

Calculation of
residual load

Calculation of
total energy
storage needs

Seperation of
long and short
term energy
storage needs

Development scenarios for RE

Target country	40 % RE	80 % RE	Import/Export	Heating sector
Austria	Already more than 40 % RE → 2020 scenarios A,B,C	2050 scenarios GREEN, BAU	Yes, combined system Germany - Austria	No
Denmark	Scenarios 2020 A,B,C Different wind development	One scenario	Yes, import/export via AC to Germany	Yes, for 80 % RE
Germany	3 scenarios A,B,C Different RE development	3 scenarios A,B,C Different RE development	No	No
Greece	2 Scenarios A,B Strong PV, strong Wind	3 scenarios A,B,C Different RE development	No	No
Ireland	Scenarios 2020 A,B,C Different wind development	One scenario	Yes, import/export via HVDC to GB	No
Spain	2 Scenarios A,B Strong PV, strong Wind	2 Scenarios A,B Strong PV, strong Wind	No	No

Development of renewable energies

Calculation of residual load

Calculation of total energy storage needs

Separation of long and short term energy storage needs

Time series

- Defining a reference scenario → 2011
- Feed-in curves of PV, Wind and hydropower for reference scenario from national TSOs
- Load curves of reference scenario from national TSOs and ENTSO-E
- Normalization of feed-in and load curves
- Scaling the feed-in and load curves accordingly to the expected installed RE to reach the desired share of renewable energies
- All data in hourly values

Development of renewable energies

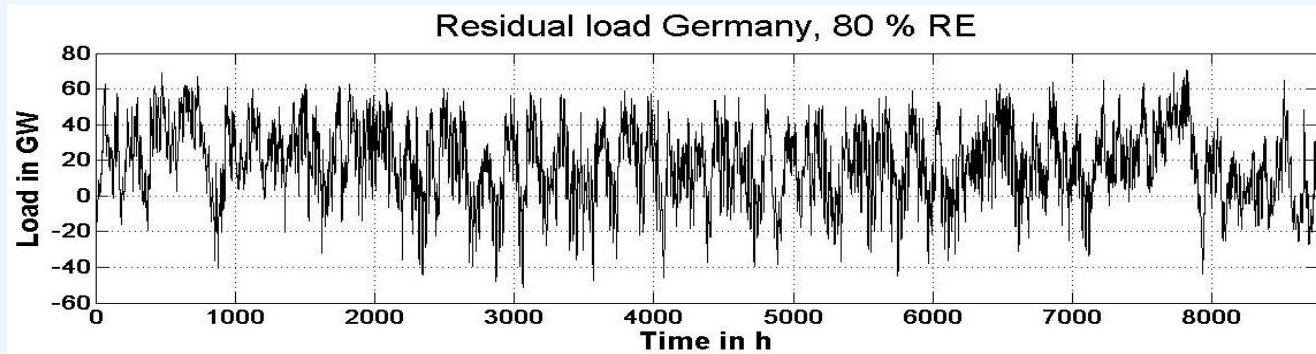
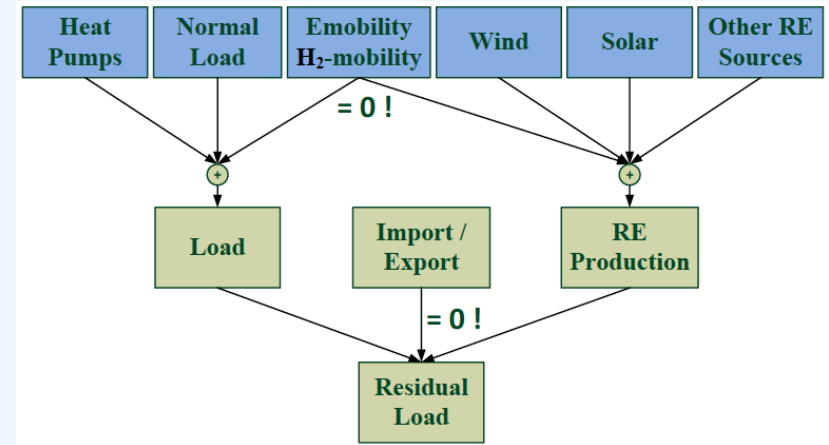
Calculation of residual load

Calculation of total energy storage needs

Separation of long and short term energy storage needs

Calculation of residual load

„Residual load = load demand that has to be covered by controllable power plants or import/export of energy“



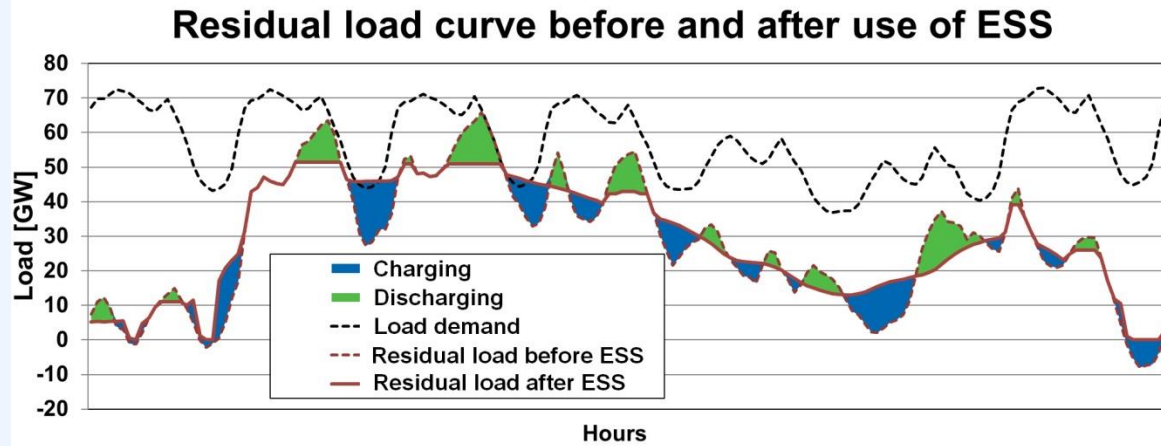
Development of renewable energies

Calculation of residual load

Calculation of total energy storage needs

Separation of long and short term energy storage needs

Operating strategy for ESS



Source: EEG

- Energy storage system (ESS) follows a peak shaving – valley filling operation strategy
- Intelligent operation strategy to integrate the most renewable energies possible
- Integration of up to 6 different technologies
- No focus on electricity spot market prices

Development of renewable energies

Calculation of residual load

Calculation of total energy storage needs

Separation of long and short term energy storage needs

Determination of storage needs

- Using the described algorithm with two technologies
- First the existing and planned energy storage facilities
 - For Germany: PHES facilities with 8 GW installed pump and turbine power and a capacity of 60 GWh
- Second an energy storage system with unlimited power and capacity (ESS 2)
- The unlimited nature of ESS 2 ensures that all renewable energies can be integrated
- The actual used power and capacity of ESS 2 is an indicator for the total energy storage needs

Development of renewable energies

Calculation of residual load

Calculation of total energy storage needs

Separation of long and short term energy storage needs

General assumptions

- No bottlenecks in transmission grids
- No import/export
- DSM/DSR as well as electric vehicles are regarded as possible additional energy storage system
- Increasing flexibility of conventional power plant mix

Development of renewable energies

Calculation of residual load

Calculation of total energy storage needs

Separation of long and short term energy storage needs

System stability

- System Non Synchronous Penetration limit (SNSP)
 - Maximum share of generation units with generator speeds asynchron to grid frequency
- Technical Minimum (TM)
 - Must run units of conventional power plants

Target country	40% RE	80 % RE
Austria	-	-
Denmark	-	-
Germany	TM: 0 GW – 10 GW	-
Greece	TM: 3.7 GW	TM: 0.4 GW – 2 GW
Ireland	SNSP: 75 %	-
Spain	TM: 18 GW	TM: 0 GW - 10 GW

Development of renewable energies

Calculation of residual load

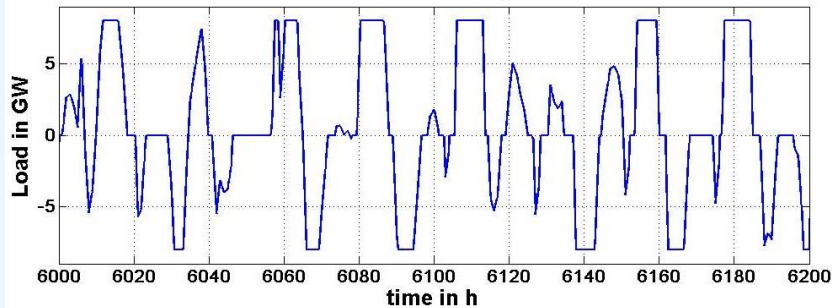
Calculation of total energy storage needs

Separation of long and short term energy storage needs

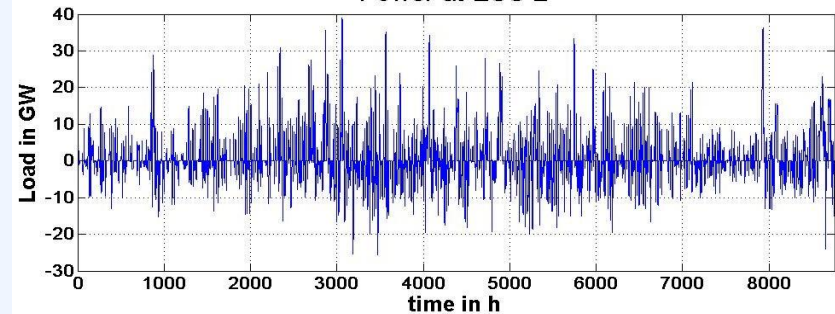
Simulation results

Germany, scenario 80 %, equal development wind and PV

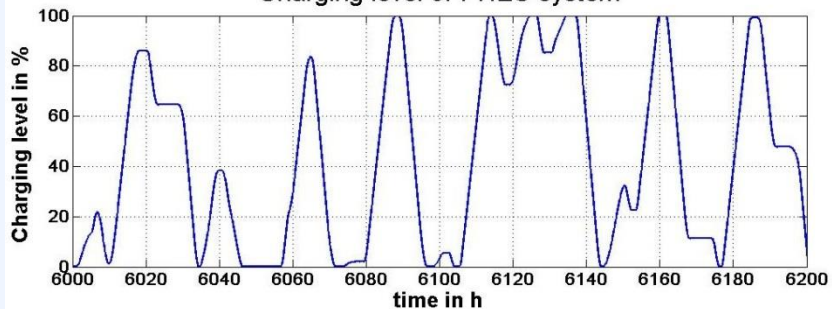
Power at PHEs system



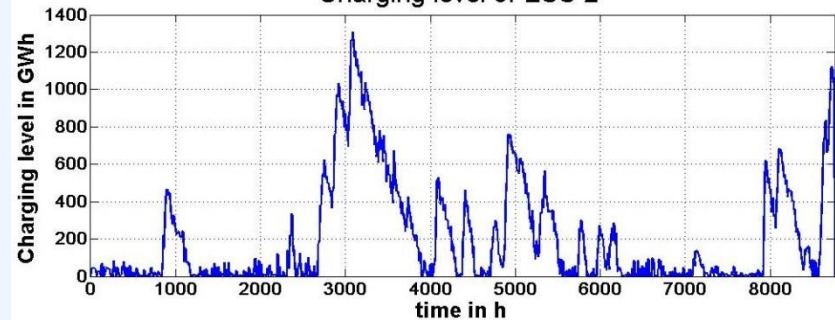
Power at ESS 2



Charging level of PHEs system



Charging level of ESS 2



Development of renewable
energies

Calculation of residual load

Calculation of total energy
storage needs

Separation of long and short
term energy storage needs

Simulation results (no SNSP/TM)

Scenarios 2020	Needed power [GW]		Needed capacity [GWh]	Capacity factor		
	Charging	Discharging		Charging	Discharging	Total
AT-A	0	0	0	11.63%	9.58%	21.21%
AT-B	0	0	0	9.00%	7.30%	16.30%
AT-C	0	0	0	7.00%	5.67%	12.68%
DE-A	0	0	0	29.51 %	24.01 %	53.52 %
DE-B	0	0	0	27.15 %	22.04 %	49.19 %
DE-C	0	0	0	30.38 %	25.12 %	55.50 %
DK-A	2.33	2.36	55.22	10.6 %	8.43 %	19.03 %
DK-B	2.26	2.27	46.71	10.6 %	8.51 %	19.11 %
DK-C	2.19	2.18	38.68	10.6 %	8.63 %	19.23 %
IR-A	1.83	1.79	59.12	11.17 %	8.89 %	20.06 %
IR-B	1.73	1.60	14.32	10.59 %	9.23 %	19.23 %
IR-C	1.86	1.76	70	10.76 %	8.91 %	19.67 %

Development of renewable energies

Calculation of residual load

Calculation of total energy storage needs

Separation of long and short term energy storage needs

Simulation results

Scenario	Needed Power [GW]		Needed Capacity [GWh]	Capacity Factor		
	Charging	Discharging		Charging	Discharging	Total
Austria	0 - 2,98	0	0	9.65% - 10,38%	8,34% - 10.37%	18,72% - 20.03%
Germany	31,85 - 55,16	25,17 - 29,04	950 - 1.534	4,97% - 5,43%	4,48% - 8,07%	9,45% - 13.43%
Denmark	4,85	3,25	660,75	10,8 %	11,3 %	22,1 %
Ireland	6.8	4.3	2.700	12,4 %	9,9 %	22,3 %
Spain	35.31 – 44.32	18.13 - 19.56	2.143 – 4.367	4,89% - 6,39%	7,52% - 13,05%	12,41% - 19,44%
Greece	7.50 - 10.56	2,17 - 2.79	172 – 1.400	3,58% - 4,71%	9,94% - -13,45%	8,29% - 18,61 %

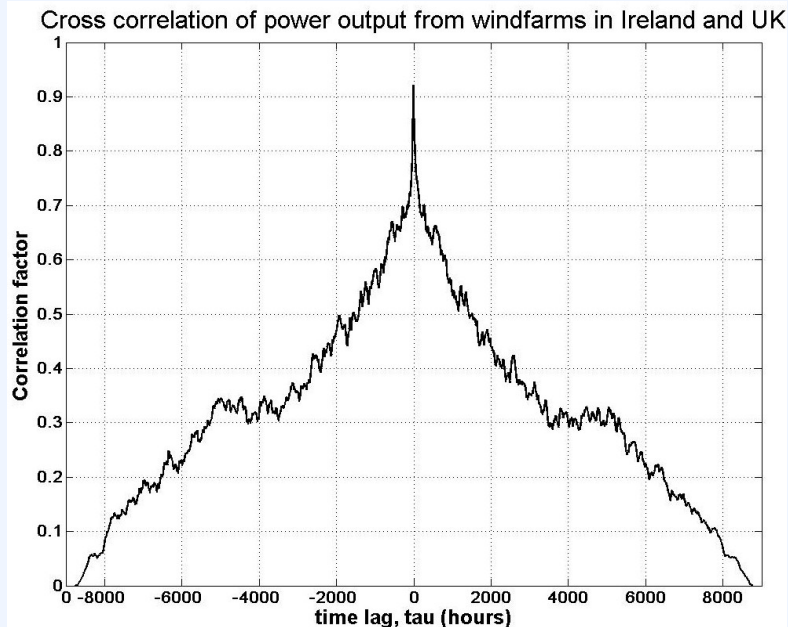
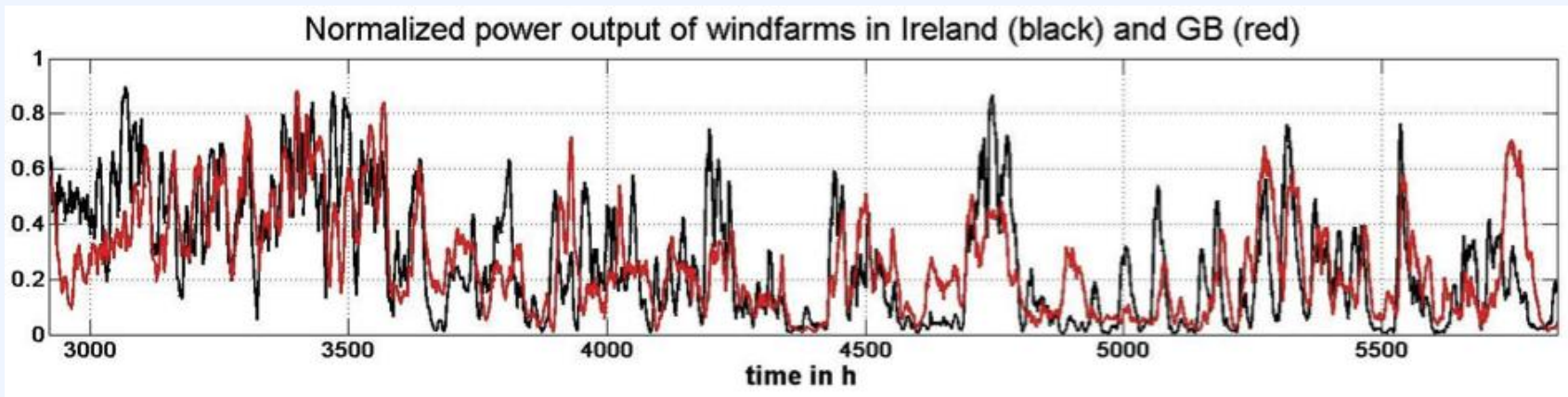
Development of renewable energies

Calculation of residual load

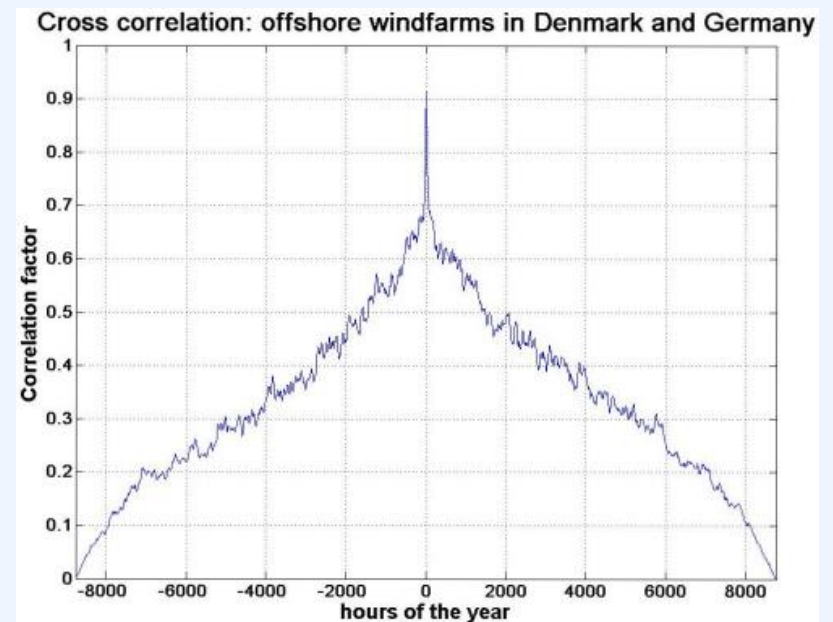
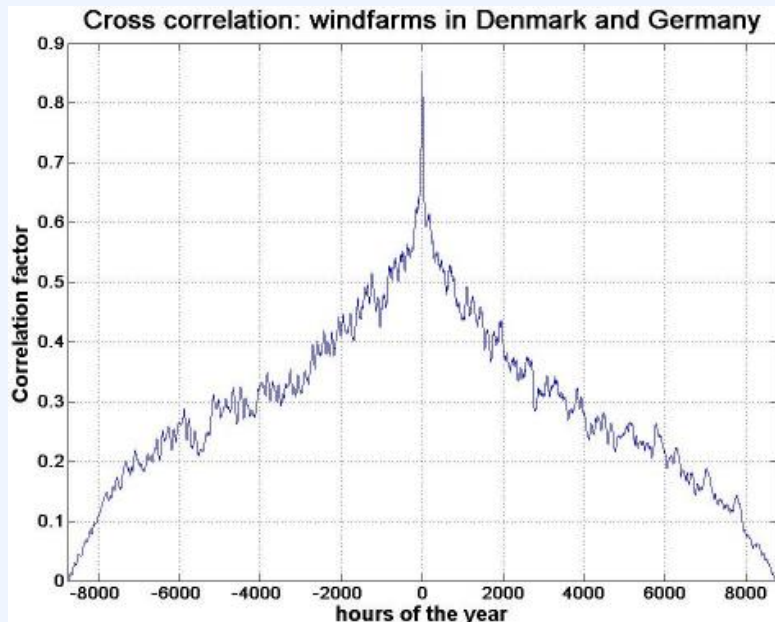
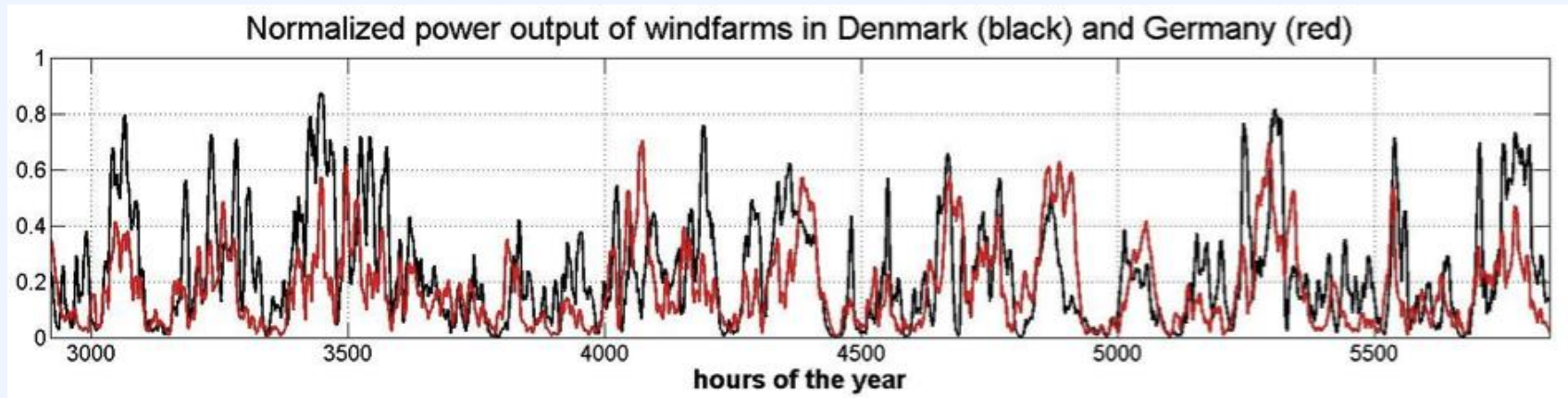
Calculation of total energy storage needs

Separation of long and short term energy storage needs

Simulation results (Ireland)

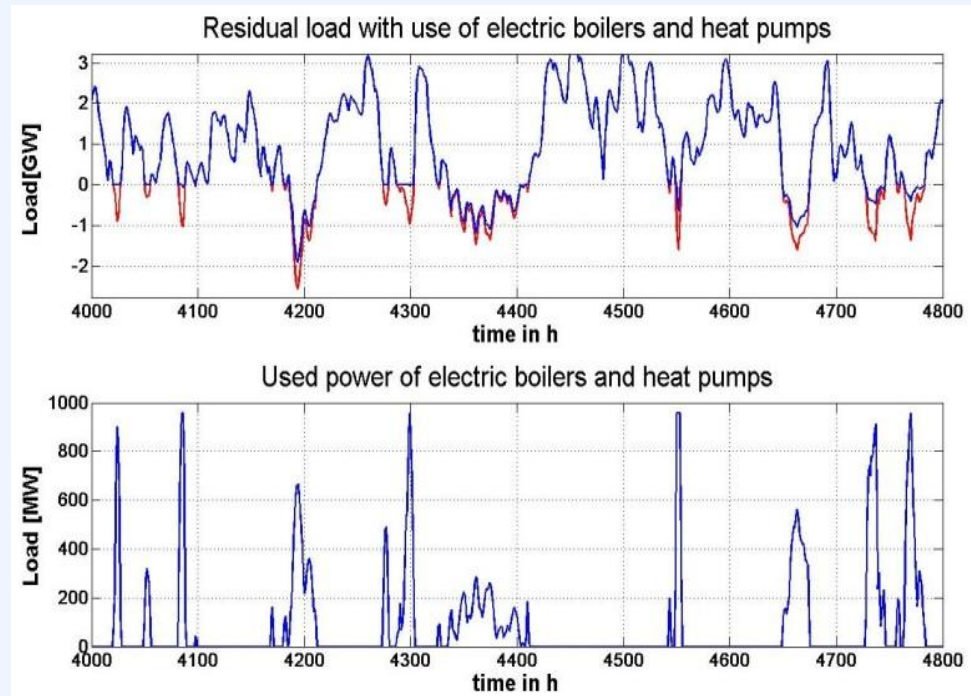


Simulation results (Denmark)



Western Denmark		2012	2020	2035
Heat pumps (DH)	MW _{el}	0	44	82
Heat pumps (indiv.)	MW _{el}	40	222	631
Elec. Boilers (DH)	MW _{el}	207	244	244
Total	MW _{el}	247	510	957

- During positive residual load the heat demand is covered by the CHP, bio fueled and centralized power plants. The heat storage is used accordingly to the operation planning of the particular power plant. The planning of the operation should be in a way that the storage capacity is fully available when a surplus of renewable energy is expected
- During periods with surplus of renewable energy the heat storage capacity is fully available

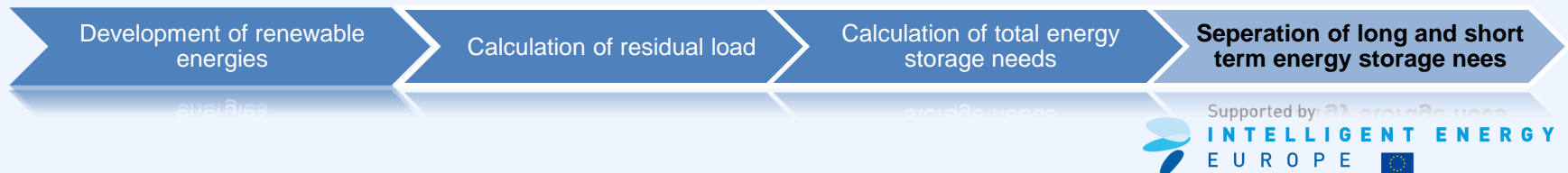


Further improvement of the algorithm

Seperation of short and long term storage needs

For the separation of the total energy storage needs into short and long term storage needs, some technical limitation can be set:

- Benchmark for separation
- Power and capacity limitations
- Setting minimum capacity factor
- Cycle efficiencies



Seperation of short and long term storage needs

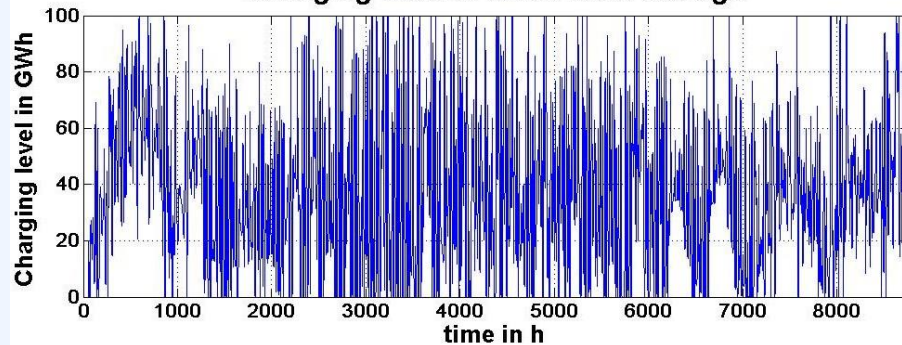
Input parameters:

- Scenario A
- Benchmark set to $T=48h$
- Short term ES (SES) limited to 12 GW and 100 GWh
- Cycle efficiency of SES set to 85 %
- Cycle efficiency of LES set to 40 %

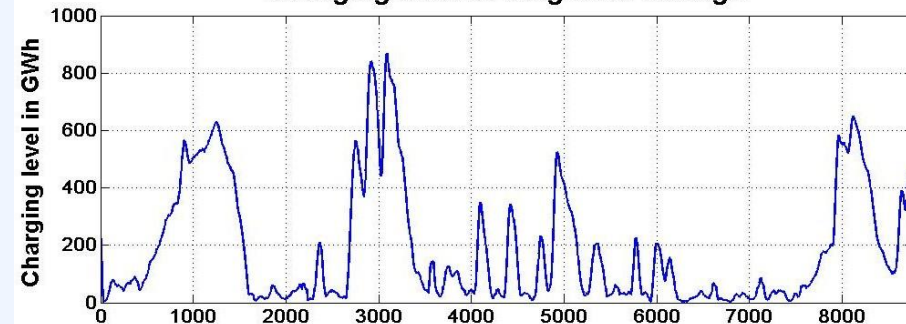
Results:

- High CF of SES: 36.5 %
- High needed power for LES (10 GW for charging, 7.5 GW for discharging)
- Low CF of LES: 17.22 %
- Rejected energy from RE: 6.3 TWh
- Increasing the CF of LES, the rejected energy will increase as well

Charging level of short term storage



Charging level of long term storage



Development of renewable energies

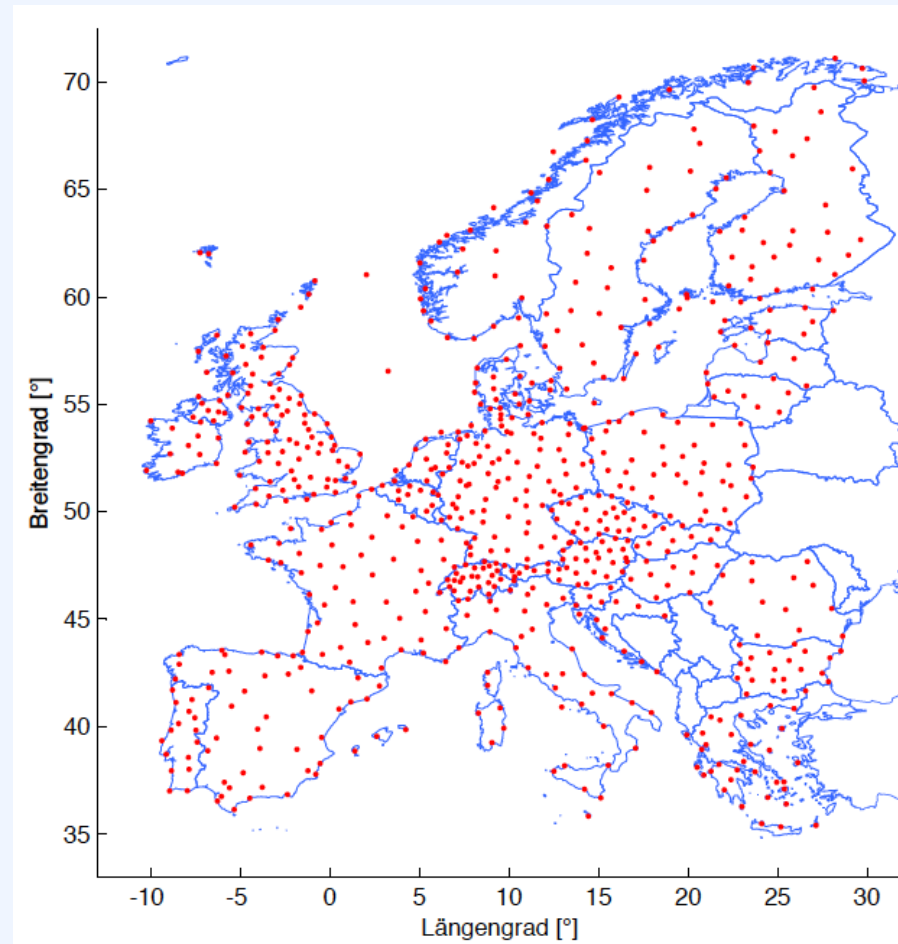
Calculation of residual load

Calculation of total energy storage needs

Seperation of long and short term energy storage needs

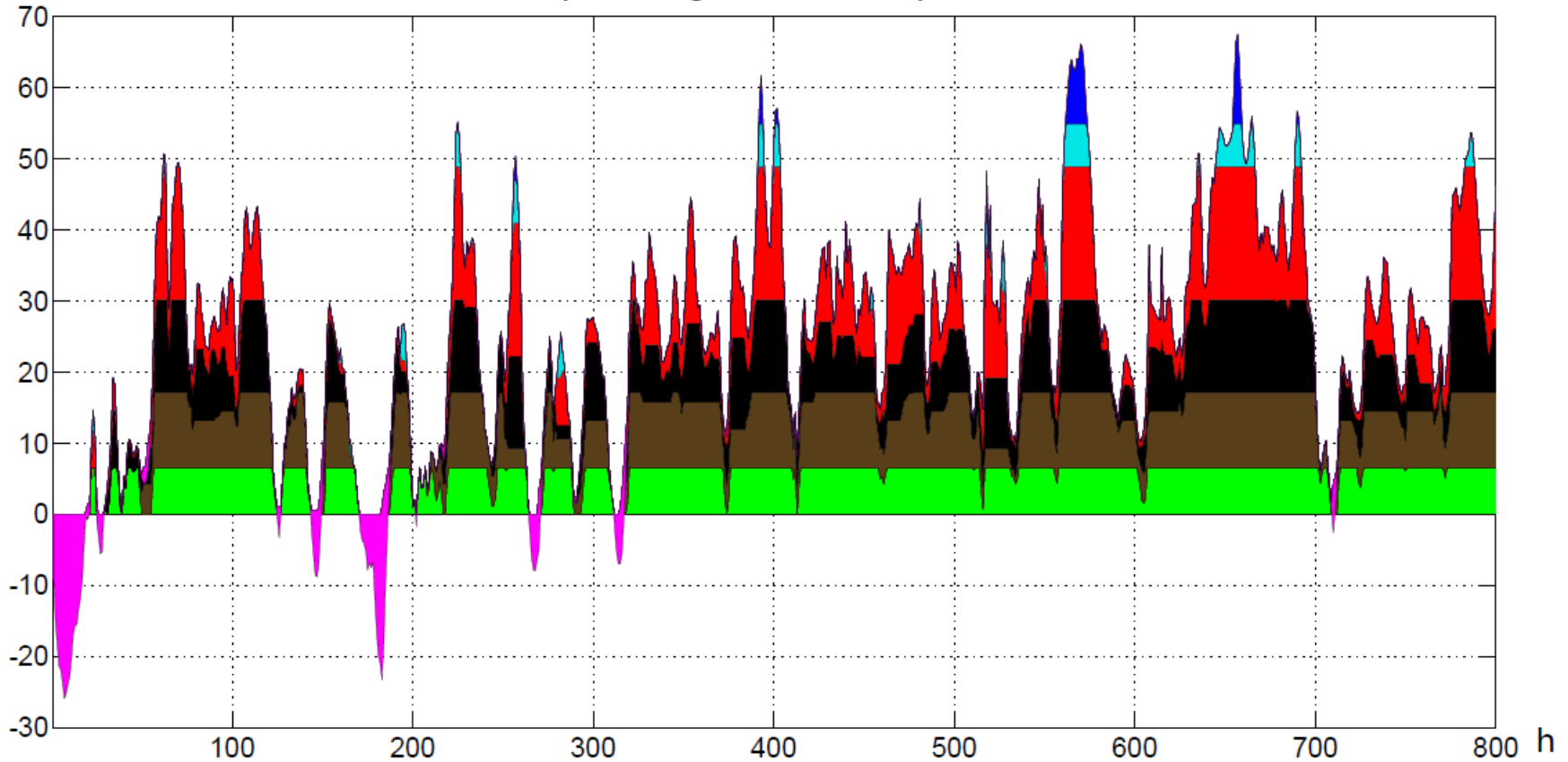
RE input data

- Feed-in data from renewable energies can now be obtained by
 - Weather data from national weather services, the internet platform S@tel-light and the meteorological data base Meteonorm®
 - Developed Wind and PV/CSP models
 - Geographical allocation of existing unitsModels were validated with actual feed-in data of different countries
- Load demand is calculated with synthetic load profiles and real load demand data provided by national TSOs and ENTSO-E



Including the power plant mix

Einsatzplanung Kraftwerkspark in GW



■ Biomasse
 ■ Kernkraft
 ■ Braunkohle
 ■ Steinkohle
 ■ GuD
 ■ Gasturbine
 ■ Leistungsmangel
 ■ Energieüberschuss

Defining different operation strategies

- Using ESS only for RES-E integration
- Minimum CO₂ emissions
- Minimum electricity generation costs
- Minimum new installed power plant capacity

Thank you for you attention

Thomas Weiß

Helmut Schmidt University

Holstenhofweg 85

22043 Hamburg, Germany

Phone: +49-40-6541-2163

Mail: thomas.weiss@hsu-hh.de

<http://www.hsu-hh.de>



UCC
Coláiste na hOllscoile Corcaigh, Éire
University College Cork, Ireland



cener
centro nacional de energías renovables
national renewable energy centre

EMD International A/S
www.emd.dk



Malachy Walsh and Partners
Engineering and Environmental Consultants



HELMUT SCHMIDT
UNIVERSITÄT
Universität der Bundeswehr Hamburg

